

Historic, archived document

Do not assume content reflects current scientific knowledge, policies, or practices.

FITZGERALDS NURSERY

STEPHENVILLE, TEXAS

LIBRARY
RECEIVED
★ NOV 15 1941
U. S. Department of Agriculture

Dear Friend:

Here is my catalog and price list for this year.

The reason I have to mail it to you is because it is impossible to tell you personally about the fine nursery stock we have, and besides that, I'm no salesman. But I have more salesmen than any other nursery I know of.

You see, all through the summer dozens of samples of fruit come to me. Folks say they want me to see what fine fruit they got from the trees I sold them. Usually they tell me of some of their neighbors that have seen the fruit, too. And of course, these same neighbors expect to order in the fall. The only way I shine as a salesman is by selling you trees that will bear the best crop in your whole neighborhood.

Of course, I could tell you folks that my trees were frost-proof and that they had never missed a crop, but you would be disappointed, because your good judgment and experience tells you that Nature plays funny tricks on trees sometimes. Since I don't want to lose a good friend and salesman, I tell you as best I can what my trees will do, and when you go out in the orchard and start picking the luscious fruit . . . you'll know I've told you the truth.

I got started out here in the sticks and built up the best business of its kind around here . . . all because I have so many good salesmen pulling for me. I want you to buy some of my trees because I feel sure I have added another good salesman when you do.

This year my peach trees will not be quite as smooth as usual due to the unfavorable season, but my pears and apples are exceptionally fine trees. They will grow and make you fine orchard trees.

I want to thank you for the orders you have sent me in the past and hope we will be sending you some more fine trees soon. Remember, it will pay you to plant an orchard now more than ever before, because by the time the world gets in a good humor again lots of the orchards will be so neglected fruit will sell at a high price.

P. S.—Better order EARLY this year because good trees are scarce and will get scarcer.

J. E. Fitzgerald

ADVANCE PRICE LIST

1941 - 1942



All Trees are Budded from Bearing Fruits in My Orchard

Jonathan

The reddest apple grown. Trees vigorous; bear abundantly and one of the best to plant with Delicious for Pollenizing. Fall.

Delicious

The apple we all know. Can be grown in Texas to perfection. Makes a big tree and if pollenized good will bear abundantly. Fall.

McIntosh

It seems McIntosh will grow all over Texas. Trees remarkably healthy. Apples white and bright red. Fine quality. August in Texas.

Yellow Delicious

A big yellow apple with a red cheek. Comes into bearing young and will sell on any market. Fall.

Early McIntosh

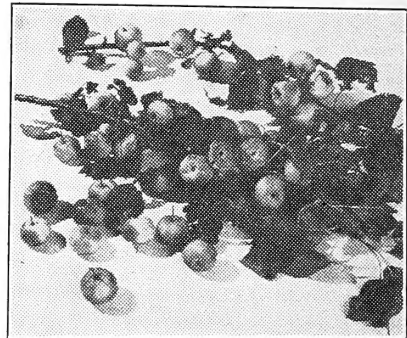
Gets ripe in June. Trees vigorous growers. Apples large bright red. Fine for market and cooking.

King David

A medium sized red apple. Trees vigorous. Good for market and canning. Fall.

Red June

A good June apple for home use. Red, medium sized.



Holland

A big red apple. Good for market and home use. July.

Ruby Red

An early Delicious, looks just like the regular Delicious only the trees bear younger and ripen about two weeks before the regular Delicious. Will sell on any market. Fall.

Crab Apples for Jelly Florence

Gets ripe in June. Bears very abundantly. Trees bear second year after setting. The best of all crabs. For Preserves and jelly.

Anoka

Likely the quickest bearing apple on earth. Trees will nearly always bear second year planted and two year trees bear first year. Average size, striped, fine for market and home use. July.

Hyslop

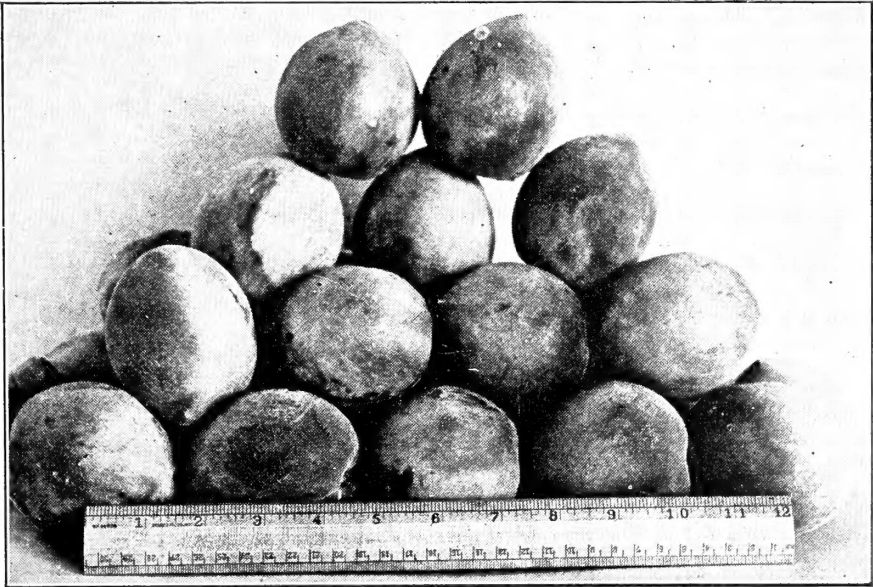
Extra large crab apple. Fine for market, cooking. Tree a beauty, ornamental. Grows anywhere.

Smokehouse

Originated in Pennsylvania. Comes into bearing quickly. Summer. Apples large with red cheek. Market and cooking. August.

Prices on Apples

	Each
2 to 3 ft.....	.17
3 to 4 ft.....	.27
4 to 5 ft.....	.35
5 to 6 ft.....	.50
5 to 6 ft. branched.....	.75
Blg Bearing Size.....	\$1.00



BALLED BEARING SIZE TREES—If you will let me know a few days in advance I can furnish you the bearing size trees balled provided you come after them. These will be taken up with as much as a hundred pounds of dirt to a tree. There will be no extra cost but I do not deliver.

MAYFLOWER. A medium sized red peach. Good for local market and fresh eating. May 20.

EARLY WHEELER. A big white clingstone with a red cheek. Good for truck and long distant hauling. June 15.

EARLY ROSE. A medium sized red peach. Good for sand. Hauls well and is also good for home use. June 20.

GOLDEN JUBILEE. A four-star peach for the past three years. A yellow freestone. Ripe when no other freestone is on the market. Good to eat, good to sell. A peach you will be proud of. Last of June.

SOUTH HAVEN. A big yellow freestone. Good for market or home planting. Very similar to Elberta only ripens earlier. First of July.

HALE HAVEN. A good peach to plant for any purpose. About the size of South Haven only has more red. An outstanding peach on any market. July 5.

BEAUTY. A hardy semi-cling until completely ripe, making it a good hauling peach. Sell good on any market. First of July.

ELBERTA. A big yellow freestone peach with lots of red next to the seed. My strain of Elberta bears every year that we have peaches. Ripens last of July.

GOLDEN GEM. A first-class yellow clingstone. Ripens the middle of August. If your wife ever cans any Golden Gem she won't use any other kind.

SALBERTA. A big yellow freestone. Ripening after the Elberta. Just a late Elberta.

INDIAN. A peach known and loved by all as it is the only peach we can remember from childhood days. Clingstone. Ripens last of July.

SURPRISE. A truly great October peach. White clingstone that will always sell.

Prices on Peach Trees

2 to 3 ft.20	4 to 5 ft.50
3 to 4 ft.30	5 to 6 ft.75
		Bearing Size90



Red Haven

Most remarkable peach known. Ripens a month before Elberta. As large as Elberta, Yellow overcovered with brilliant red. Sure bearer. We can only sell these trees assorted with other trees. If you order Red Haven alone the trees will be twice the price of other peaches.

Keiffer

The Keiffer, to my way of thinking, is the most profitable pear on the market. Trees vigorous, heavy bearers, a big rather long pear, yellow with a red cheek when ripe. Ripens in September and can be wrapped in paper and kept for weeks. Truly a fine pear.

Lincoln

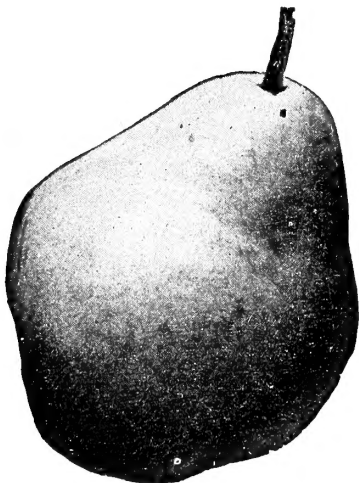
A big green and yellow pear that ripens in August, doesn't have to be gathered and stored to ripen out, but is good right off the tree. Late blooming and sure bearing.

Bartlett

The pear of quality. The trees sometimes blight even under the best conditions, but if you are willing to fight the blight here is the pear supreme.

Garber

The trees grow very large. Have long willowy branches, pretty for a yard tree. The pears are large, rather short or nearly round. Fine quality. Ripens in August.



Leconte

Makes a fine thrifty growing tree. Never fails to bear. Trees do not blight. Pears fine for eating raw. Ripening in August.

Big Boy Pear

We got a start of this from a doctor at Chihuahua, Old Mexico, but he got it from a brother at Salt Lake City, Utah. It is large red cheeked; fine to eat right off the tree. We have not thoroughly tried it out but it seems to be a good one. I understand that a fellow now claims to have it patented.

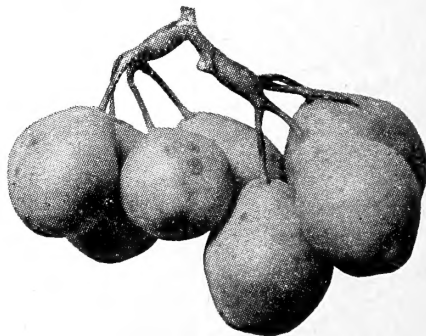


Espalier Pear Trees

Most remarkable pear tree in the world. Can be trailed up on a wall like a vine or if set out in the open will grow into a fine tree. Blooms out late and never caught by frost. Pears are as fine as can be grown and the trees never blight. When we send the trees to you they are extremely crooked. Surprise your friends and grow pears on a wall or trellis, or in tree form. \$1.00 each.

Prices on Pear Trees

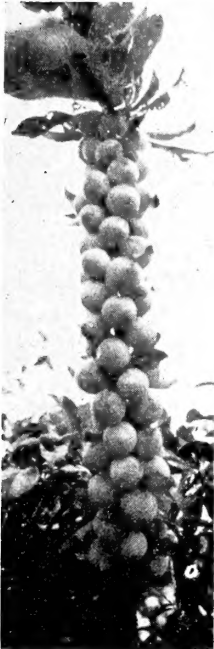
	Each
2 to 3 ft.....	.20
3 to 4 ft.....	.30
4 to 5 ft.....	.40
5 to 6 ft.....	.60
Bearing size90



Douglas

Blight proof. The Douglas pear in most cases will bear the next year after planting. The quality extra good. Main objection overloading.

BURBANK xxxxx



A big purplish-red plum with yellow flesh. Ripe about June 15. Trees vigorous.

SAPA xxxxx

A hardy plum originated by Professor Hansen. Adapted to the northern plains but will do good anywhere planted. Medium sized, red with deep red meat. Makes a shrubby tree. Ripens in June.

METHLEY xxx

A purple plum with pink meat. Very delightful quality. Only objection tree not so healthy. Medium to large in size. Ripens in June.

AMERICA xxxxx

The America plum is a yellow plum unless allowed to stay on the tree until dead ripe then it turns red. But would be classed a yellow plum. A large plum. Ripe about June 1.

WANETA xxxxx

A fine growing tree. Frost resistant. Nice fruit, bright red and heart-shaped. Ripe June 1.

HANSKA xxxxx

A medium sized red plum with a heavy blue bloom. Flesh is firm, yellow with good keeping qualities. Very fragrant. Ripens last of June. Tree hardy

COMPASS CHERRY PLUM xxxxx

A cross between a cherry and a plum. Wine colored fruit. Bears second year set. Frost resistant. Ripe June 10.

THE SUPREME xxxxx

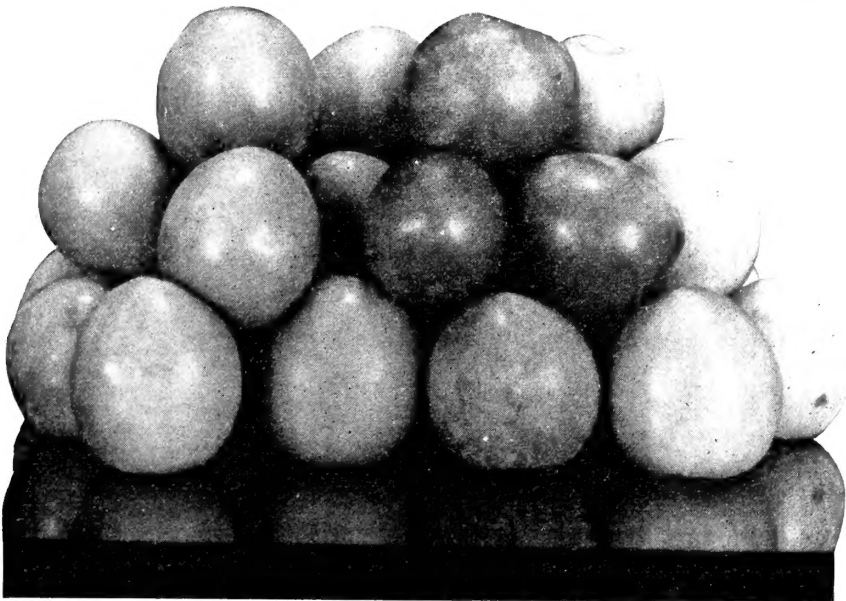
Large heart-shaped plum that gets ripe in July. A pretty red plum. Trees vigorous and the plums are not easily blown off as they grow near the center of the tree. Bears heavy and is an excellent market plum.

Price on Plums

	Each
2 to 3 ft.....	.20
3 to 4 ft.....	.30
4 to 5 ft.....	.50
4 to 6 ft.....	.75
Bearing size90

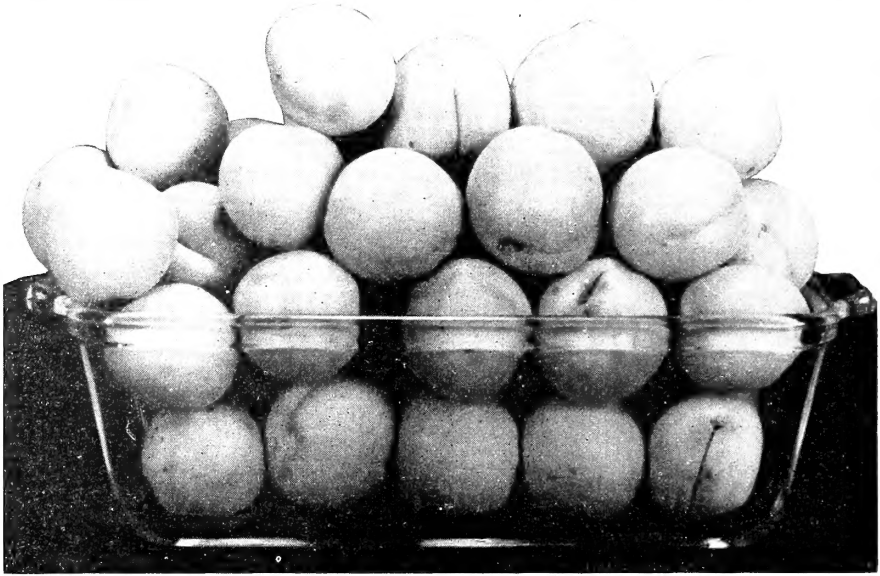
BRUCE xxxxx

Our most outstanding plum this past spring. Big to extra large red. Can be hauled if gathered in the proper stage. Trees grow very much like the old thicket plum. Ripens the 20th of May. If planting either for commercial or home use be sure and plant some Bruce. Outsells other plums in fruit stand 2 to 1.



FITZGERALD'S APRICOTS ARE PROVED BEST BY EVERY TEST

Little Sam Apricot—the only true Little Sam on the Market. Accept no Substitutes



Apricots average size, deep yellow. Bear in great clusters on the tree and have no objectionable fiber of any kind. It makes a pretty tree and worth its room for shade but will doubly repay any one with its great loads of golden fruit. Gets ripe about the middle of June. Excellent for fresh eating and canning.

Hungarian Best Apricot

The scions of this apricot were brought from Hungaria about twenty years ago. Likely the largest apricot tree in the world and one of the thriftest growing trees. Proving to be as regular to bear as any peach. High colored and the finest quality. The worms bother it very little.

Border Queen

A pale yellow apricot, red cheek, luxuriant growth. Originated in Western Kansas.

New Moorpark

One of the largest of all apricots and the strain that I have bears good. This apricot is as large as a peach; fine quality to can. Gets ripe about June 15.

Prices

	Each
2 to 3 ft.....	.25
3 to 4 ft.....	.40
4 to 5 ft.....	.50
5 to 6 ft.....	.75

Big Bearing Size\$1.00

Trees that die first year, replaced at half price.



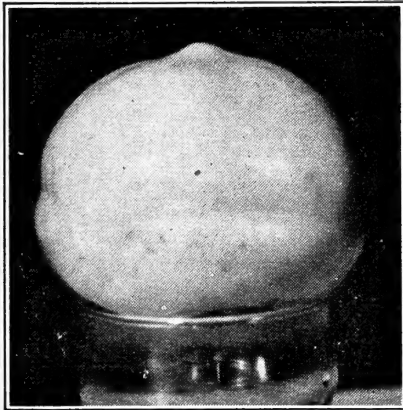
Eureka Persimmon

Originated by J. E. Fitzgerald. No Other Equals It in Quality

This is not the largest persimmon we grow but it is the most profitable. Medium sized deep red about the shape of a tomato. Hauls well and bears heavily. The trees do not have to have any extra care after once established. First ripe ones will be found in September from then by proper handling can be kept until January.

Prices on Persimmons

	Each
2 to 3 feet25
3 to 4 feet35
4 to 5 feet50



Tane Nashi

A large acorn-shaped persimmon, pale yellow and very productive. This is the persimmon you see in most stores selling for 5 cents each.

Improved Wild Persimmon.

I have two wild persimmons that I have been growing and cultivating and show a decided improvement over the others scattered around over my place. One of these I call Early Golden, ripening in August, then the Golden, ripening in October.

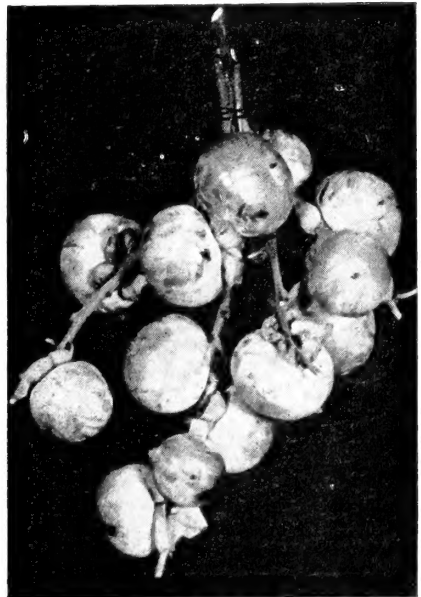
WE PAY TRANSPORTATION ON ORDERS OF \$3 OR MORE. FOR ORDERS OF LESS THAN \$3 ADD 15c TO EACH DOLLAR.

Tamopan

This persimmon came from China and is easily distinguished from other varieties as it has a ring around it. The tree grows rapidly.

Fuyu

The Fuyu is large bright red, tomato-shaped. Heavy bearer and the fruit can be eaten a month before frost. Soft, non-astringent. A profitable variety to plant.



Cherries for Delicious Pies

SWEET CHERRY. I do not know just what particular variety of sweet cherry this is but it is the only sweet cherry I have found that will bear in this section. Makes a hardy tree and comes into bearing early.

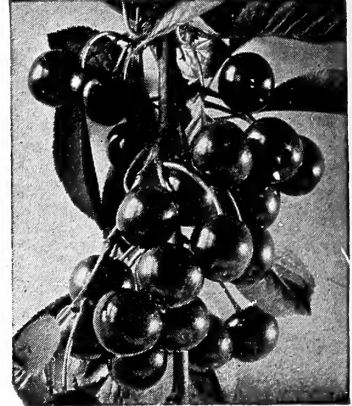
NEW CENTURY xxx. Nearly black, fair quality, productive.
EARLY RICHMOND. Medium,

dark red, juicy, acid. A good bearer.

ENGLISH MORELLO. Fair size Blackish red. Juicy. Good.

MONTMORENCY. Large red, productive. Later than Richmond. A fine cherry to plant.

WRAGG. Hardy vigorous and productive. Dark red. Proving to be a good bearer here where we thought we would never grow cherries.



Prices on Cherry Trees

	Each
2 to 3 ft.....	.30
3 to 4 ft.....	.40
4 to 5 ft.....	.60

Fitzgerald's Figs Bear the First Year Set

CELESTE

A very hardy fig. Stand lots of cold. One of the first figs to be planted in the South. Fruit medium size.

BROWN TURKEY

Fruit is brown, almost black and very sweet. Will stand near zero weather. Doesn't bear on first year shoots like the Harrison.

MAGNOLIA

A large straw colored fig and very profitable. Rapid growing and the leaves are forked. New set plants will bear the first year.

HARRISON

Found in Tarrant County many years ago and now widely acclaimed as the best fig on the market, but bearing many different names. The plants will put on figs when twelve inches high and even if killed by frost will come up and bear abundantly. Fruit very large, straw colored. Extra quality.

Prices on Figs

	Each
1 to 2 ft.....	.15
2 to 3 ft.....	.25
4 to 5 ft.....	.50



Well, well, time sure gets away from us. A few years ago I had a picture of my little pop-eyed kids in my catalog, and now they are all great big fellows. Two of them are married. Mrs. Ham is still here in the office and believe me she is sure fussy, always after us if we don't get an order out on time.

The insert picture shows our two children that are at home, and of course, you guessed it, the other two folks are me and my wife. And while she has it over me in age, I have the advantage of her in looks, don't you think?

If you visit us you'll find us the folksiest kind of folks . . . trying our best to be more interested in giving you good trees than in getting your money . . . although it does take a certain amount to keep things going.

WE PAY TRANSPORTATION ON ORDERS OF \$3 OR MORE. FOR ORDERS OF LESS THAN \$3 ADD 15c TO EACH DOLLAR.

YOU CAN MAKE MONEY IN YOUR BACK YARD WITH THESE PECANS



BURKETT

A large round pecan; fine flavor; trees vigorous and hardy. Nuts are always full of meat. Easily shelled. A great pecan for any man's orchard.

PRICES

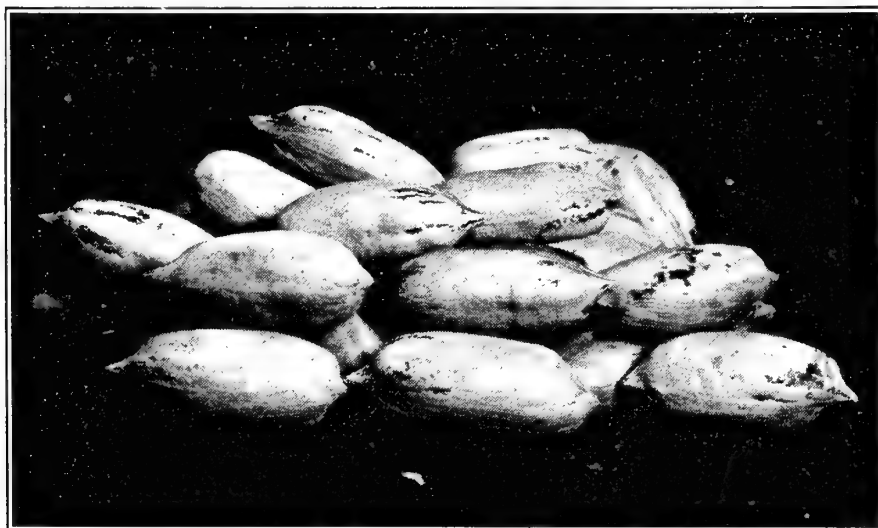
	Each
2 to 3 ft.....	.75
3 to 4 ft.....	1.00
4 to 5 ft.....	1.25

EASTERN SCHLEY

Grows best on low land and rather tardy coming into bearing. The nuts are long, thin shelled, pretty and a winner if you happen to have the land that will produce them.

WESTERN SCHLEY

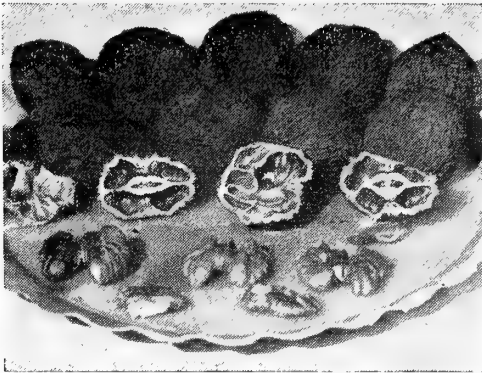
Medium large long nut. We sell a lot of trees of these. It is a pity they are not of such quality as the Eastern Schley.



**MADAM X
A Truly Great Pecan**

The largest pecan on the market. Long, well flavored. Trees bear young and abundantly. Nuts will sell for 50c per pound anywhere.

TREES GROWN TO STAND COLD AND PRODUCE PAYING CROPS



EUREKA WALNUT

Tree is remarkably vigorous, upright grower; leaves and blooms fully three weeks late. Nuts large, elongated, smooth and tightly sealed.

WALNUT FRANQUETTE

Nuts very large, long and pointed; kernel full fleshed, sweet and rich. This is probably my favorite of the English walnuts tried.

MAYETTE (Grande) WALNUT

Tree hardy, buds out late and buds abundantly. Nuts large and uniform, shells light colored. Doing extremely well in this section.

QUINCE

This fruit will grow most anywhere. The trees are rather small shrubs. However, I have seen some as high as ten feet. They make even finer preserves than pears. I have only one variety—the Orange. Large yellow. Price of trees, 25c each.

HANSEN BUSH CHERRIES

Price, 15c each or \$1.00 per dozen. A very popular fruit among the Indians of South Dakota. The little trees bear the second year set. A tree two feet high will be loaded with fruit. The cherries are a little larger than the ordinary cherry and make the very best sauce and pies and we like them right off the plants. Some of them will be yellow but even from the seed they are all good. Plant them along a fence or in any small place. Stand frost and drouth likely better than any other fruit. Originated in the deserts of South Dakota.



JONES PATCH BUDDER

Cuts a patch 1/2 by 1 inch. Razor steel blades. Aluminum handles. Full directions furnished.

\$1.75 Each

PRICES ON WALNUTS

2 to 3 ft.....	.75
3 to 4 ft.....	1.00
4 to 5 ft.....	1.50

CARPATHIAN WALNUT

The seed of these walnuts came from the Carpathian mountains in Poland and are very hardy. I can furnish a limited number. They run about three feet high.

WILSON WONDER WALNUT

The largest of all English walnuts. Doesn't bear as heavy as the smaller varieties which hold true with nearly any large fruit. Makes a very beautiful tree and comes into bearing quickly.

THOMAS BLACK WALNUT

The best black walnut so far found. Nuts large, easily peeled; bears abundantly. Trees vigorous.



WE PAY TRANSPORTATION ON ORDERS OF \$3 OR MORE. FOR ORDERS OF LESS THAN \$3 ADD 15c TO EACH DOLLAR.

FITZGERALD'S GRAPES ARE HARDY AND EASY TO GROW



CARMAN

THE CARMAN GRAPE

Our best. Vines very thrifty; in fact, just hardy as vines can be. The grapes are large, black and thick on the cluster. A cluster of these is nearly as solid as a ball. Bears from one to two bushels per vine and the best eating grape I have ever seen. If you have been planting grapes that would not sell, plant some Carman. They outsell anything else on the market.

CHAMPANEL GRAPE

Large, black, very popular. Grows on any kind of soil, either sand or blackland. A cross between the Concord and Champini, giving it the highest vitality of all grapes. Good to graft other grapes on. Good quality when well ripened and fine for juice and wine.

CONCORD GRAPE

This grape is proving a better grape for the South than I thought it would. It gets ripe very late, though there will be a few black grapes on a bunch by July 1. Really ripe from August 15 until September. Large black, thick hull.

MOORES EARLY GRAPE

One of the very earliest of all black grapes. Medium to large. Good quality and a wonderful bearer.

SCUPPERNONG

The best known of its family. Large bronze fruit, sweet pulpy flesh. Bears abundantly. Price 35c.

JAMES MUSCADINE

Produces the largest fruit. Black, very juicy and sweet. Price 35c.

THOMAS MUSCADINE

Fruit medium size; dark and very juicy. Excellent for making grape juice. Price 35c.

BIG EXTRA

An extra large black grape, very prolific. Bears in large bunches, taking prizes at fairs wherever shown.

NIAGARA

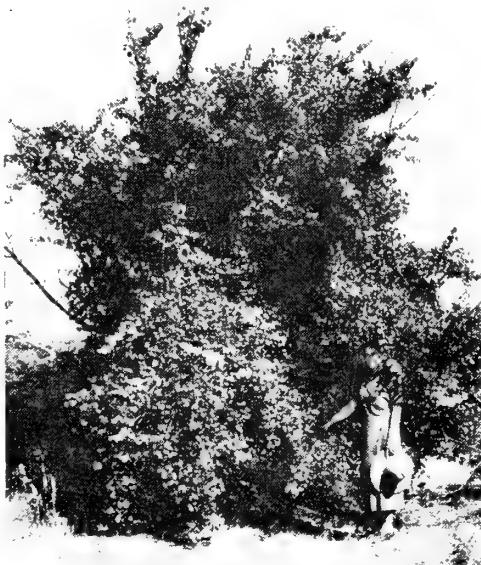
One of our best grapes. Big, white, with a delicious flavor. I saw Niagara grapes grown in this section this year that would compete with any California-grown grape.

GOETHE GRAPE

Very large, pink, oblong grape. Gets ripe in the fall. My father raised this grape forty years ago. Never rots.

Prices on Grapes, except Muscadines

1 year field grown10
2 year field grown15

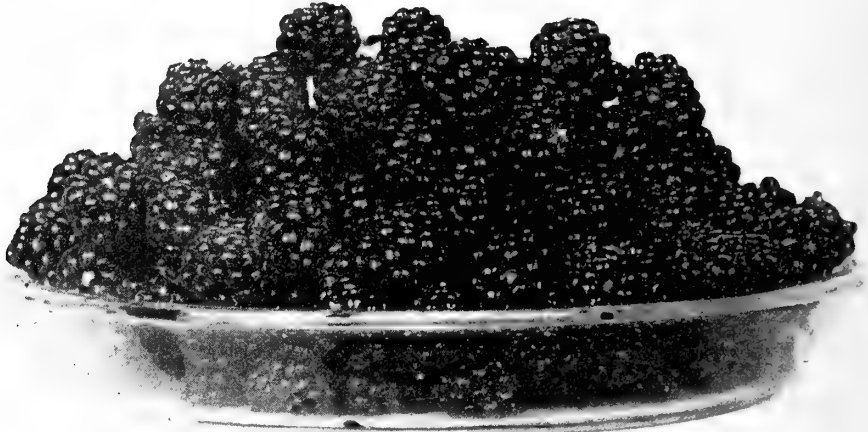


SCUPPERNONG

EARLY

WONDER

Found and Introduced by J. E. FITZGERALD



To my way of thinking, the best berry so far found has been renamed many times. A rather round berry, firm, and the vines are very productive. So far has done well everywhere planted. If you want a first-class berry, plant Early Wonder. Price, 10c each; \$1.00 per 12; \$3.00 per 100; \$25.00 per 1000.

MCDONALD BERRY

One of our oldest berries, medium sized, firm long berry and grows in clusters. Will not bear planted alone, and so far the Early Wonder has been the best pollinator for the McDonald in my patch. If you have berry vines that have been failing and what berries they did have were just a seed or two, you have McDonald and they need something for pollination. The earliest berry we have. Price of plants, 10c each; \$2.25 per 100; \$21.00 per 1000.

RIVERSIDE

Originated down near the Colorado River in Mills County. A good bearer and fine quality. 10c each; \$1.00 per 12; \$3.00 per 100.

AUSTIN BERRY

A very large blackberry, shiny and attractive when boxed. The plants are vigorous and very productive. Do not overlook the Austin to furnish a longer berry period. Price of plants, 10c each; \$1.00 per 12; \$2.00 per 100; \$12.50 per 1000.



BOYSENBERRY

A big luscious berry. A few days later than the Young; sells good on any market. Price of plants, 10c each; \$3.50 per 100; \$30.00 per 1000.

MULBERRIES

Fine for the Chicken Yard

Mulberry Prices

3 to 4 ft.....	.40
4 to 5 ft.....	.65

THE HICKS (Everbearing)

Bears for four months through the spring and late into the summer. The trees will grow into great size. The mulberries are large and good quality.

AULO OR YOUNGBERRY

A cross between the Logan and Austin berry. A large berry, well flavored and makes a hardy vine. Ripens a few days before the Boysen.

10c each; \$1.00 per 12; \$3.50 per 100

THE NEW AMERICAN MULBERRY

Real early. Often ripe by the fifteenth of April. Tastes extra. Bears for six weeks.

LANDSCAPING IS EASY WITH OUR BIG SELECTION OF STOCK

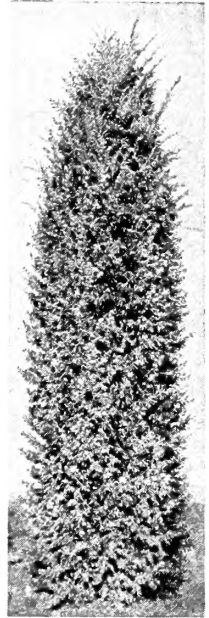
CEDRUS DEODORA



I only have a few of these to offer, as my seed supply was cut off from the foreign countries. 12 to 18 inches. Price \$1.00 each.

ITALIAN CYPRESS

Tall evergreen, used for corners and in front of tall columns. 12 to 18-inch plants, bare rooted. Price 50c each; 2 to 3 ft. \$1.00.



BAKERS ARBOR VITAE

A pyramidal type of evergreen, widely used in landscape planting, 12 to 18 inches. 50c each.

ROSEDALE ARBORVITAE

Round, compact and a very beautiful green color. 12 to 18-inch plants, 50c each.

EUONYMOUS

A good evergreen to plant either for hedge or next to the wall. Broad glossy leaves. One-year plants, 25c each.

NANDINA

The most colorful of all evergreens, leaves turn a fiery red in the winter and have red berries in cluster, 10 to 12-inch, 25c; 12 to 18-inch, 35c; 18 to 24-inch, 50c.

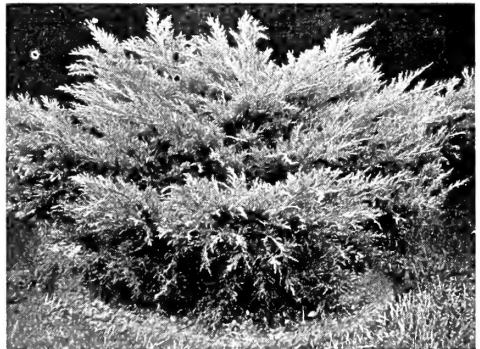
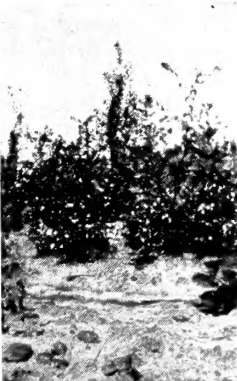


DWARF BOX

These never get very large. Used for borders or in pots. Two-year plants, 50c each.

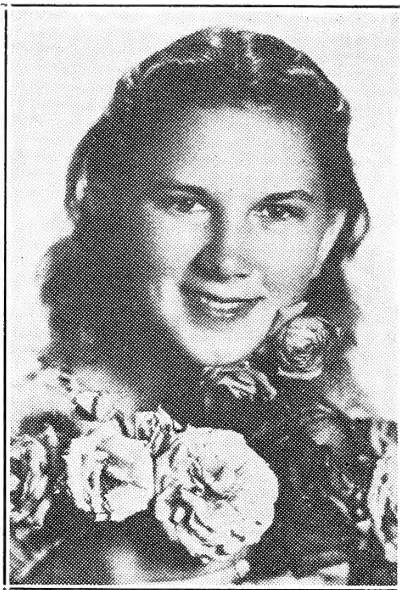
ABELIA

Foliage dark glossy green with small white and pink flowers; leaves turn bronze in the fall and winter. Two-year plants, 25c each.



PFITZERS JUNIPER

A low spreading type of evergreen. 12 to 18 inches, bare rooted. Price 50c.



Prices on Roses

No. 1 35c each

White Roses

CALEDONIA K. A. VICTORIA

Red Roses

E. G. HILL FRANCIS SCOTT KEY
RED RADIANCE RED COLUMBIA

Yellow Roses

LUXEMBURG JOANNA HILL

Yellow and Red Roses

CLIMBING TALISMAN
TALISMAN HOOVER

Pink Roses

BRAIRCLIFF PINK RADIANCE
COLUMBIA

**MEXICAN
TUBE ROSES**
Easily grown and very
sweet and fragrant.
Six strong bulbs, 25c.

**DIANTHUS or HARDY
PINKS**
I can furnish these
for 25c each.

CANNAS

City of Portland—
Deep rose, green foli-
age.
Hungaria—Pink.
Eureka—White.
President—Bright red.
Shenandoah — Yellow
with red specks.
Golden Gate—Yellow.
Statue of Liberty—
Red.
Rose Gigantea—Pink.
Louisiana—Red edged with yellow.
Prices on Cannas, 15c each, \$1.00 per dozen.



ANGEL LILY

Looks almost like an
orchid. 15c each.



**QUEENS CROWN
BULBS**

A fast growing vine that has pink blossoms. Year
old plants 10c each or 3 for 25c.

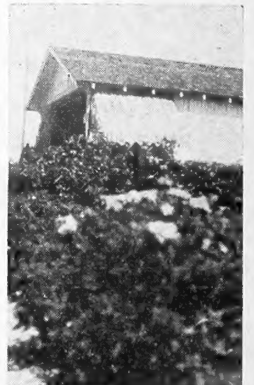
**AMOUR RIVER
PRIVET**

Our most popular
hedge plant. Can be
sheared to any shape.
12-in. plants, 4c each;
18-inch 5c; 24-inch 6c;
36-inch 10c.



BUSHEL O' MUMS

Plants grow very much in the shape of a bushel
basket and will be covered with flowers from late
summer until frost. Red, yellow, pink and white.
15c each.



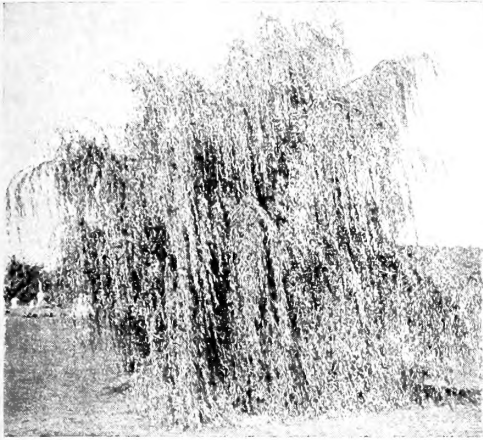
LODENSE PRIVET

A dwarf growing
privet. A fine border
plant. 10-inch plants,
7c each; \$6.50 per 100.

**CALIFORNIA
PRIVET**

Has big shining leaves.
Can be sheared or used
as specimen plant. 2
to 3 ft. plants, 15c ea.;
\$6.00 per 100.

SHADE TREES ADD VALUE AND BEAUTY TO YOUR HOME!



WEeping WILLOW

A well known weeping tree. Nice to plant in back yard or anywhere you want a tree. Regarded by all as very beautiful. 2 to 3 ft. trees 15c; 3 to 4 ft. 25c; 4 to 5 ft. 40c.

FLOWERING WILLOW

A willow that stands the driest weather. Beautiful with pink flowers. Blooms all summer. 3 to 4 ft. trees 50c.

JUDAS TREE or REDBUD

A long-lived shade tree; hard wood; large round leaves, making a dense shade. The first tree to bloom in spring; has pretty red flowers which last a few weeks. Price, 1 to 2 ft. 15c; 2 to 3 ft. 25c; 3 to 4 ft. 35c.



CHINESE ELM

I am now listing Chinese Elm trees so cheaply you can afford to buy them if you live on a rented place. 2 to 3 ft. 25c, or 10 for \$2.00; 3 to 4 ft. 35c, or 10 for \$3.00; 4 to 5 ft. 45c, or 10 for \$4.00.

CATALPA

2 to 3 ft. 25c; 3 to 4 ft. 40c; 4 to 5 ft. 60c.

VINES

WISTERIA—I can furnish either purple or blue at 35c each.

HALLS HONEYSUCKLE—Yellow and very fragrant. 25c each.

TARTARIAN HONEYSUCKLE—Pink flowers in May and June, followed by red berries. Grows 8 to 10 feet tall. 35c each.

BITTERSWEET—Glossy foliage with cluster of berries. 25c each.

SHRUBS

SPIREA FROEBELLI—Deep rose-colored blooms in the middle of summer. 50c each.

SPIREA VAN HOUTTI or Bridal Wreath—A well known spirea. Always used. 25c each.

SPIREA ANTHONY WATERER—A dwarf shrub with red flowers. Good for borders. 50c each.

ALTHEA—I can furnish these in white, pink or orchid. 25c each.

CORAL BERRY—Covered with red berries all winter, 25c each.

IRIS—We have a big assortment of iris but unable to give any special color. 50c per 12, mixed.

CRAPE MYRTLE

I can furnish these in pink, red and orchid. 1 to 2 ft. 15c; 2 to 3 ft. 25c; large plants, 50c each.



SYCAMORE

2 to 3 ft. 35c, or 10 for \$2.50; 3 to 4 ft. 60c or 10 for \$5.00; 5 to 7 ft. \$1.10, or 10 for \$10. Big trees two inches through, \$2.50.



SPIREA THUNBERGIA

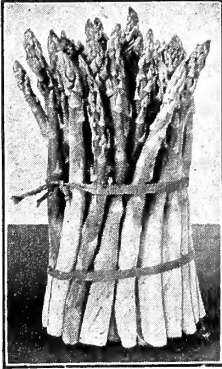
Has a feathery - like foliage and a solid mass of white flowers in early spring. 35c each.



MIMOSA

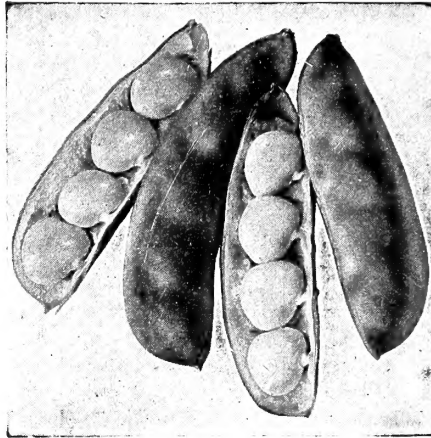
Our most beautiful tree. Known as the South African fern. A mass of pink blossoms in the spring. I only have small trees to offer. 12-inch trees, 3 for 50c.





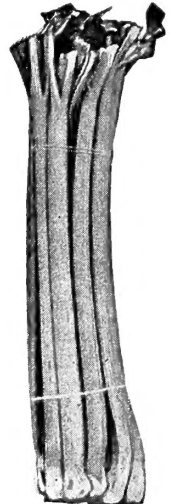
ASPARAGUS

We have two good kinds: Palmetto has been grown in the South, and Martha Washington, the new kind that is proving very popular. 10c each; 35c per 12; 75c per 50; \$1.25 per 100; \$8.50 per 1000, postpaid.



HOPI BEAN

I believe this is the most wonderful bean on the market. A dozen vines will make enough beans for a small family to eat and can. Starts bearing in July and will bear until frost. A lima type bean has to be trellised. Pkt. 10c; oz. 35c.



RHUBARB

Victoria, best of all for South. Strong plants 5 for 55c; 95c per dozen or \$7 per 100.



WRAPPING TAPE FOR TREES

The attached picture shows how this tape is used to keep borers out of trees and rabbits from gnawing them. It is put on without string or any kind of tie. Just wrap spirally around the tree and bury the lower end in ground. It is made of two sheets of paper with cement between. It will stretch and will protect the tree all winter and in summer from scald and other pests. One of the best things we have offered. Two inches wide, per roll, 35c. A roll runs about 50 yards. Four inches wide, per roll, 60c. Prepaid.

SEA CANE

Must be a species of Bamboo but I am unable to find it described in any reference book. Grows up in great clumps. The name we have always had it under gives the impression that it will grow near the sea. I find it growing on the very poorest land. Fine for stakes, fishing poles, to make shades, etc. It will stop ditches and make a wind break to hold the sand. I have never seen anywhere that it is good stock feed but I find that mules will eat this when in green state. I believe it could be made very valuable on marsh land as stock feed or around ponds. Tops die back every year and come out from the roots. Three clumps for 35c.

WHITEWASH

Fitzgerald's Whitewash for trees. Not paint. We have been using this for years. Sometimes you need to whitewash new set trees to keep the rabbits from bothering them but do not have time to make up a wash. This wash will not only keep the rabbits from bothering your trees but it will make the bark nice and smooth and kill the San Jose Scale where it touches them. Put on with a small brush. If it is rainy during the winter, will take two applications. One gallon will go over 100 new set trees a couple of times. Price per gallon, prepaid, \$2.10. Two gallons \$4.00 or 5 gallons \$8.00, express prepaid.

... NOTICE ...

Our nursery is off the highway and it is a little unhandy to get to though the road is fairly good. We maintain a place three miles west of Stephenville on a paved highway and if you prefer to come after your trees send your order a day or two ahead and they will have them at the place on the highway ready to go. In that way you will lose no time and your trees will be wrapped so you will have no trouble hauling them.